

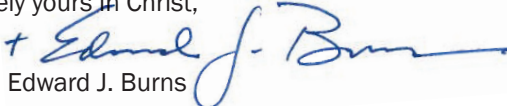
# Diocesan Stewardship Appeal Blessings & Needs

Dear Friends in Christ,

These next few pages are to give you a glimpse into some of the accomplishments and needs within the Diocese of Juneau. While we are the smallest Diocese in the country, we probably have the largest number of buildings per capita for a Catholic community. Just in the Juneau area alone the Diocese has 24 buildings—the Shrine of St. Therese has 15 buildings (ten of which have heat); St. Paul the Apostle Parish has four buildings; the Cathedral has three buildings, and the Diocese has the former St. Ann's Hospital (the site of the Chancery, Catholic Community Services and some rented office space) and the bishop's residence. I learned quickly that the climate and weather of SE Alaska demands continued upkeep of buildings and property. This insert is to give you an idea of what we have done and what we still need to do.

In addition to property management are the various programs that are offered throughout the Diocese in catechesis, sacramental preparation, out reach and evangelization. All that we have and do, our buildings and our programs make up the work of the Church—the Body of Christ. It is important that we maintain the vibrancy and vigor of the Church's presence within all our communities and I ask that you join me in strengthening the Church in Southeast Alaska.

Sincerely yours in Christ,

  
Bishop Edward J. Burns



BISHOP  
EDWARD J. BURNS

*For further information and photos visit [www.dioceseofjuneau.org](http://www.dioceseofjuneau.org)*

## Cathedral of the Nativity Juneau

416 5th St., Juneau, AK 99801 • 907 586 1513 • [www.juneaucathedral.org](http://www.juneaucathedral.org)

### Blessings:

The Cathedral's greatest blessing is its faithful, involved, and welcoming community of parishioners. The Catechesis of the Good Shepherd program is growing rapidly; the RCIA program has had participants each year that then become a part of the welcoming faith community.

### Needs:

The 100-year-old church is no longer meeting the needs of our parishioners. It is inaccessible to persons with certain disabilities, and does not have the necessary space for our larger liturgies. Rotting wood and a deteriorating foundation in several locations are making the need for a new church more urgent.



Estimated Need  
**2.5 M**

## St. Paul the Apostle Juneau

9055 Atlin Ave., Juneau, AK 99801 • 789-7307 • [www.stpaulsjuneau.org](http://www.stpaulsjuneau.org)

### Blessings:

Our parish life remains vibrant. Fundraising for the World Youth Day pilgrimage was generous and successful. Facility upgrades to the interior of the old worship space are happening as funds allow.

### Needs:

Paying off the current mortgage is our priority. In addition, the church exterior needs paint/oil, telephone lines are in need of work, carport area needs completion, and the classroom/social building needs updated bathrooms and new windows.



Estimated Need  
**1 M**

## Holy Name *Ketchikan*

433 Jackson St., Ketchikan, AK 99901 • 907 225 2570 • [www.holynamektn.com](http://www.holynamektn.com)

### Blessings:

Holy Name continues to have successful Alaska Day fundraising events, raising over \$60K toward Holy Name School support. Most recently, parish forces came together to replace a damaged storm drain, and the underground fuel tank.

### Needs:

Although the parish has many facility needs, the most pressing is for financial assistance for Holy Name School. The annex facility—damaged by water two years ago—is also in need of extensive repairs.



Estimated Need  
**\$200,000.**



## Northern Missions

### Holy Family Mission, Gustavus, & Kake:

These communities may benefit from having a dedicated chapel, so as to give those small Catholic communities a focal point and gathering place.

St. Francis Chapel, Tenakee Springs is blessed with a chapel renovated less than a decade ago.

## St. Catherine of Siena *Petersburg*

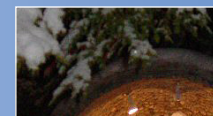
PO Box 508, Petersburg, AK 99833 • 907 772 3257 • [www.stcatherineofsienapetersburg.com](http://www.stcatherineofsienapetersburg.com)

### Blessings:

Volunteer laborers recently completed the insulation of the crawl-space, as well as the hall and rectory. A beautiful staircase was also built by a parishioner.

### Needs:

Further insulation is still needed for the church and crawl space. In addition, the grotto is in need of a shelter to protect it from the weather. The cost of transportation for the parish priest—shared between Wrangell and Petersburg—is also a significant financial need.



Estimated Need  
**\$20,000.**

## St. John by the Sea *Klawock, Thorne Bay Chapel*

PO Box 245, Klawock, AK 99925 • 907 775 2345 • <http://www.parishesonline.com/scripts/hostedsites/org.asp?p=3&ID=732>

### Blessings:

The Thorne Bay Chapel exterior was renovated by Ben Williams and Rob Williams (son); they donated their time and paint. The interior was renovated by Dan Romey.

### Needs:

Klawock is in need of priest vestments. Thorne Bay is in need of a small office space.



Estimated Need  
**\$10,000.**

# Blessings & Needs *of the diocese of Juneau*

## St. Rose of Lima *Wrangell*

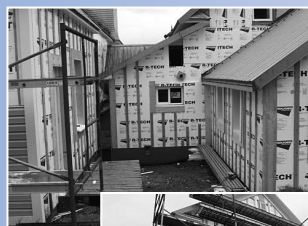
PO Box 862, Wrangell, AK 99929 • 907 874 3771 • [www.stroseoflimawrangell.com](http://www.stroseoflimawrangell.com)

### Blessings:

The exterior of the church and rectory was recently completely insulated, re-sided and new windows were installed, extending the life of this historic church another 100 years.

### Needs:

Paying off the mortgage is the most urgent financial need of the parish. In addition, a retaining wall on the uphill side of the church is needed to correct and redirect drainage. Additional attic insulation is needed for the church/rectory.



Estimated Need

**\$10,000.**

## Sacred Heart Mission *Hoonah*

PO Box 368, Hoonah, AK 99829 • 907 945 3323

### Blessings:

The church building is functional and in fair condition.

### Needs:

The church building could be cleaned and made more attractive; exterior siding needs repainting, and the grounds could use some minimal landscaping.

Estimated Need

**\$2,000.**

## St. Ann Mission *Yakutat*

PO Box 323, Yakutat, AK 99689 • 907 784 3287 or 907 784 3396

### Blessings:

The new kitchen in the basement hall will be a boon to social activities in the parish. Hot water to the washing machine has been an improvement as well.

### Needs:

A collapsing retaining wall is in need of repair. The upstairs bathroom has had water damage, and both interior and exterior painting projects are in need of attention and funding.

Estimated Need

**\$10,000.**

## Shrine of St. Therese *Juneau*

415 Sixth St., Juneau, AK • 907 780 6112 • [www.shrineofsainttherese.org](http://www.shrineofsainttherese.org)

### Blessings:

Recent improvements and additions at the Shrine include the newly rebuilt Shrine Post Office cabin, and a new wayside cross at the entrance to the Shrine grounds, donated by Bishop Edward Burns in memory of his family.

### Needs:

The Shrine contracted and received the brass plaques for the Luminous Mysteries (Mysteries of Light). A site has been selected between the Joyful and Sorrowful mysteries. Rock work, topsoil and garden plants will be needed to bring the project to completion.

Estimated Need

**\$8,000.**



## St. Gregory Nazianzen *Sitka*

PO Box 495, Sitka, AK 99835 • 907 747 8371 • [www.http://sites.google.com/site/stgregorysitka/](http://sites.google.com/site/stgregorysitka/)

### Blessings:

St. Gregory parishioners recently built a new Shrine on church grounds (see page 7), and continue to comprise an active and strong parish.

### Needs:

The south side of the church wall needs repair. The single-paned windows need to be replaced with double-panes for weatherization and insulation purposes. Other facility improvements include replacing rectory soffit screens, garage door, and wood doors and frames.



Estimated Need  
**\$15,000.**

## St. Theresa of the Child Jesus *Skagway*

PO Box 496, Skagway, AK 99840 • 907 983 2271

### Blessings:

A new furnace was installed in the summer of 2011. Our shed received a new floor and ramp. Painting the exterior and trim of the church is an ongoing project.

### Needs:

The bathroom walls need updated treatment, and the east side of the church needs gutters. The rectory needs updating including a new bathroom.



Estimated Need  
**\$12,000.**

## Sacred Heart *Haines*

PO Box 326, Haines, AK 99827 • 907 766 2241 • [sacredheart@aptalaska.net](mailto:sacredheart@aptalaska.net)

### Blessings:

Recent improvements to the facility have included: concrete wall and sheetrock repair; vinyl siding installed on church and rectory; new metal doors to church and rectory; and re-plumbing the furnace room pipes and zone valves.

### Needs:

The 1985 asphalt shingled roof should be replaced, as well as the leaking domestic water pipes. The aging boiler and lighting fixtures are no longer efficient and should be updated to more efficient technology.



Estimated Need  
**\$30,000.**